



THE LONDONER
LEICESTER SQ.

EVENTS AT THE LONDONER

LOCATION LOCATION LOCATION

Set on the south west corner of Leicester Square, The Londoner is located where the capital comes alive. Where entertainment, connections and icons come together to create something very particular; an essential foundation of the London experience.

The endless possibilities and convenient location of this area are some of the reasons why London is voted the preferred city in Europe for meetings and events, time and time again. The Londoner is proud to be in the midst of it.

THE SOUTH WEST CORNER OF LEICESTER SQUARE

16 storeys
A soaring Ballroom
Spaces for mind and imagination
Two private screening rooms
350 bedrooms and suites
Six concept restaurants and bars
A private guest Residence
An urban Retreat
A new definition of lifestyle

PREMIERES 2021

A SUPER BOUTIQUE HOTEL

The super boutique experience is individual. Intimate. Both eclectic and curated. It encompasses unexpected capacities and dimensions, matching the logistical and technological ability of the most dedicated meetings and events venues in the world.

INDIVIDUAL

noun

“a single human being as distinct from a group.”

The world of events has changed. Purposeful experiences are in, old-fashioned conferences are out. Real-time tweets and mobile networking mean every event attendee holds the key to your success in their hand. Expectations have skyrocketed; dining quality, engagement and wellbeing are top of the agenda.

The Londoner recognises that the reputation of your event rests on the satisfaction of the individual. Discover a new offering that welcomes creativity, purpose-built to entertain and excite.



A NEW STAGE

THE SPACES AT A GLANCE

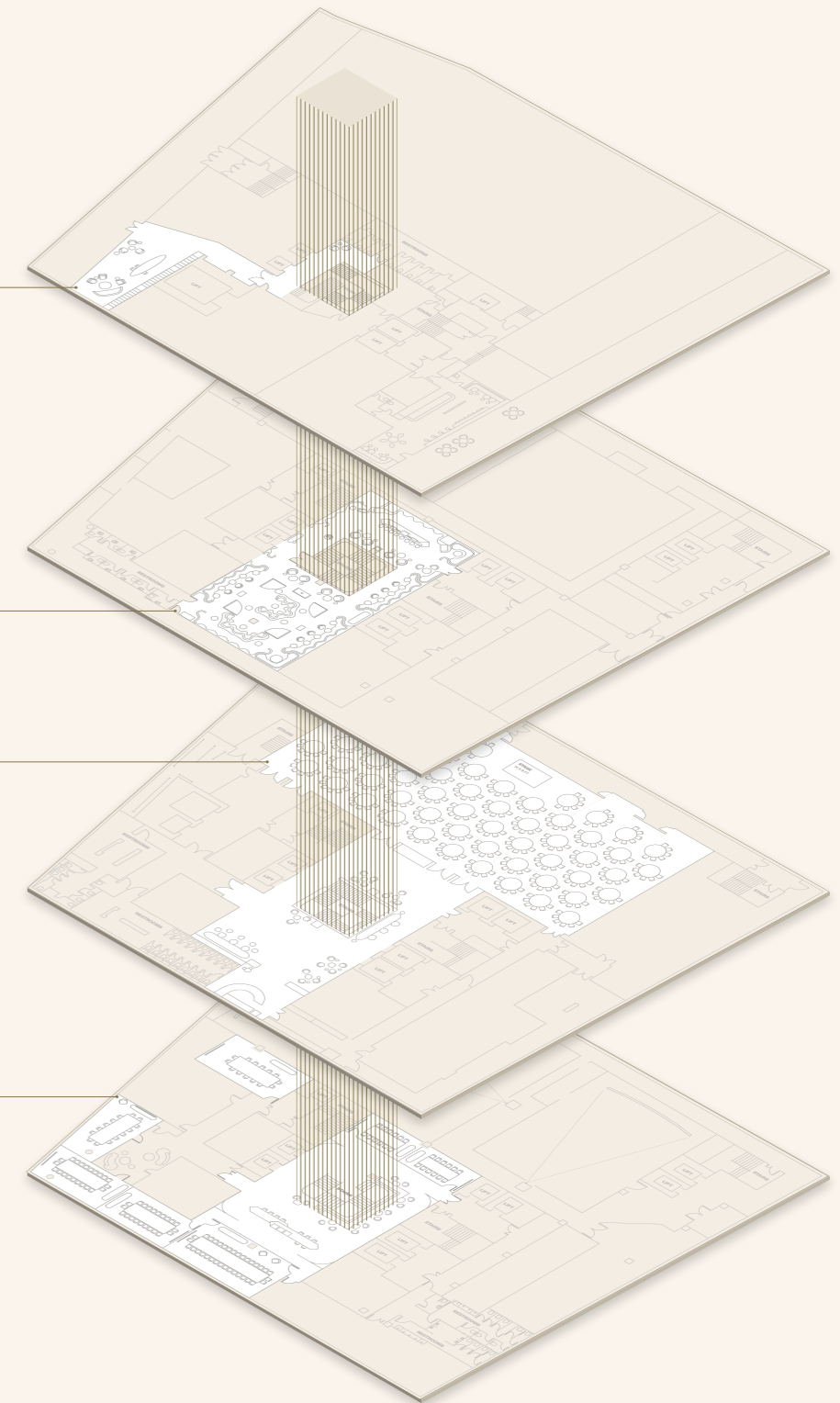
PRIVATE ENTRANCE
50 WHITCOMB STREET

THE GREEN ROOM
LEVEL B1

THE BALLROOM
LEVEL B2

THE GALLERY
LEVEL B3

The National Gallery
Somerset House
Royal Academy of Arts
Tate Britain
Hayward Gallery
Serpentine Gallery
Maddox Gallery





THE BALLROOM

GREAT EXPECTATIONS



Launch parties. Inspiring conferences. Extravagant gala nights. Designed with big events in mind, The Ballroom offers rare opportunities and experienced event planners.



SOUND

Concert-level decibels in perfect clarity

- Line array sound system for live music performances and large private functions
- Secondary sound system with 22 speakers for conferences and background music
- Digital mixing desks with wireless AES-encrypted microphones
- Onsite dedicated AV team for bespoke event production
- Live audio and video conferencing with up to six built-in video cameras
- Eight wall panels with multiple AV connections, including DJ inputs
- Assisted Listening with infrared system or Wi-Fi

VISION

Set the scene for visual spectacles

- Four state-of-the-art Christie laser projectors with 17,400 lumens
- Two 16:10 ratio 5.5m wide motorised projection screens
- Two 16:10 ratio 6m wide motorised projection screens
- Lighting system with directional spotlights
- Ambient lighting to suit your requirements
- Signage screens to personalise your event with logos, videos, and more
- Dedicated broadcast infrastructure with hybrid optical fibre
- Over fifty moving LED lights controlled by a digital lighting desk

LOGISTICS

Designed for seamless event organisation

- Configurations: Landscape and Portrait. Dinner, Theatre, U Shape, Cabaret, Boardroom, Reception, Hollow Square, Classroom, Live Bands, Game shows.
- A loading bay with space for a vehicle up to 10.4m in length with 20 kPa imposed load
- 14 lifts and direct access from loading bay to The Ballroom
- Pre-function area and bar
- Two kitchens, east side and west side
- Sky fold partition to split The Ballroom in two sections
- Private cloakroom and bathrooms

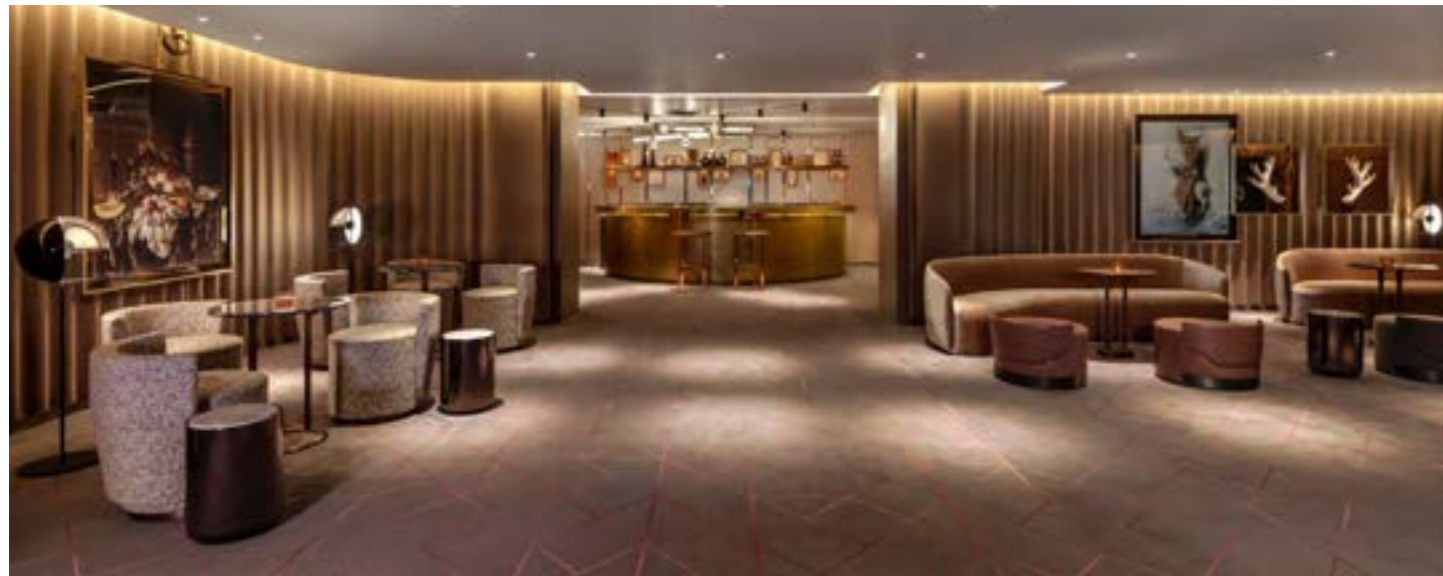
EQUIPMENT

Arrive practically empty handed

- Eight motorised truss systems
- In-house equipment to run two independent events simultaneously
- Wall-mounted touch panels to control technical facilities for small events
- Dedicated lighting, audio-video control desks and operators for running larger events from temporary control locations
- Lecterns with microphones for presentations
- Staging and dancefloor
- Raised stage for presentations
- Apple TV, Chromecast, Sony PlayStation and Xbox available on demand
- Hardwired Internet access on request
- HDMI and cable-free connectivity for presentations



A state-of-the-art multifunctional space for private dinners, corporate functions, weddings and presentations.

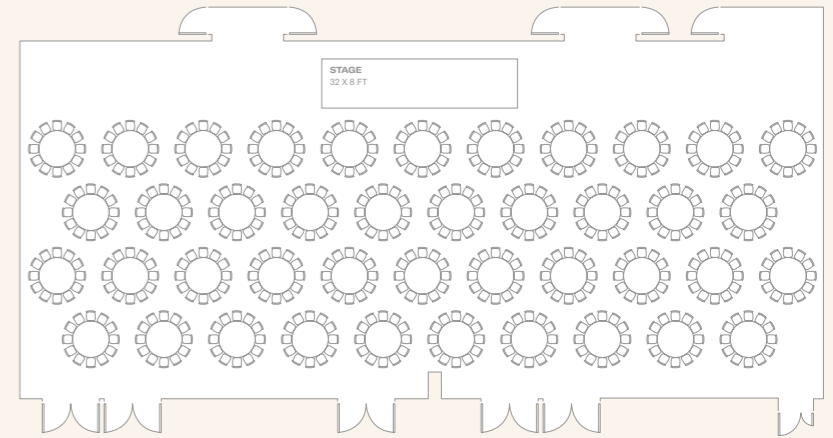


CAPACITIES	Theatre	Classroom	Boardroom	Cabaret	Lunch/Dinner	Reception
Ballroom	708	432	-	336	600	850
Ballroom A	367	216	48	216	300	350
Ballroom B	328	216	42	144	276	310
Ballroom Foyer	-	-	-	-	-	200

DIMENSIONS	Area		Length		Width		Height	
	sq. m	sq. ft	m	ft	m	ft	m	ft
Ballroom	566	6,093	35.6	116' 8"	15.9	52' 2"	5.8	19'
Ballroom A	289	3,115	18.2	59' 7"	15.9	52' 2"	5.8	19'
Ballroom B	272	2,927	17.1	56'1"	15.9	52' 2"	5.8	19'
Ballroom Foyer	237	2,551	-	-	-	-	-	-

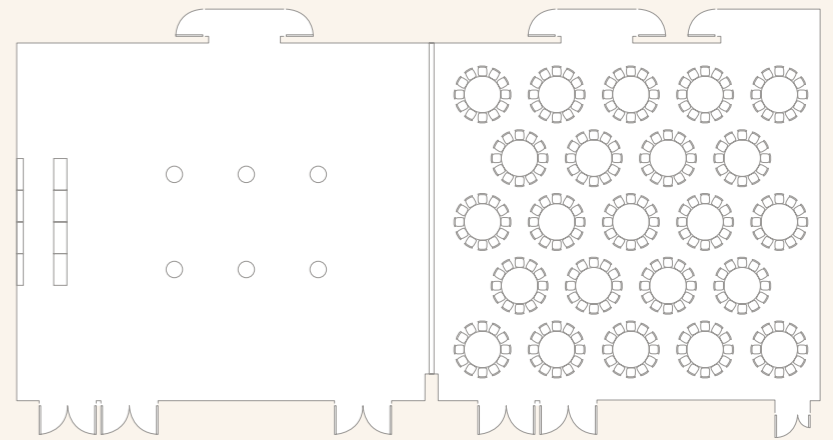
DINNER
with stage

42 tables:
504 capacity at 12 per table
420 capacity at 10 per table



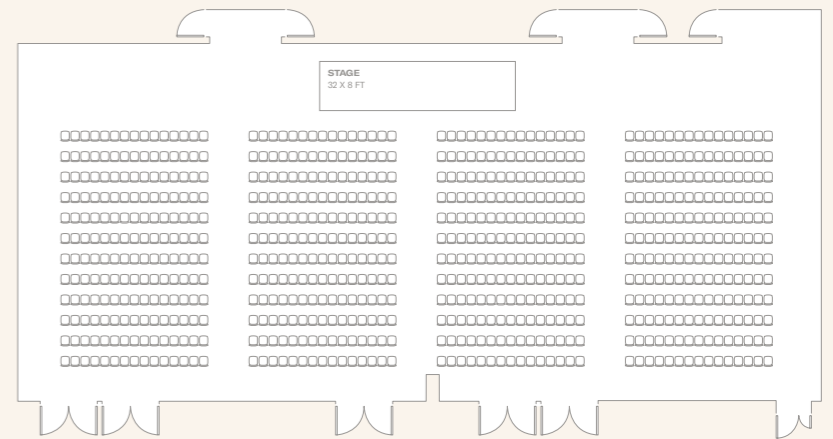
RECEPTION AND DINNER
with skyfold partition
creating separate spaces

23 tables:
276 capacity at 12 guests per table
230 capacity at 10 guests per table



THEATRE STYLE
with stage

720 guests



For more room layouts tailored to your event, please email events@thelondoner.com

Capacity will vary depending on additional requirements such as staging or dance floors.

Shaped to entertain

THE GREEN ROOM

With a private bar, luscious fabrics and rich colour palettes, The Green Room is a dream for the elite host.

LOGISTICS

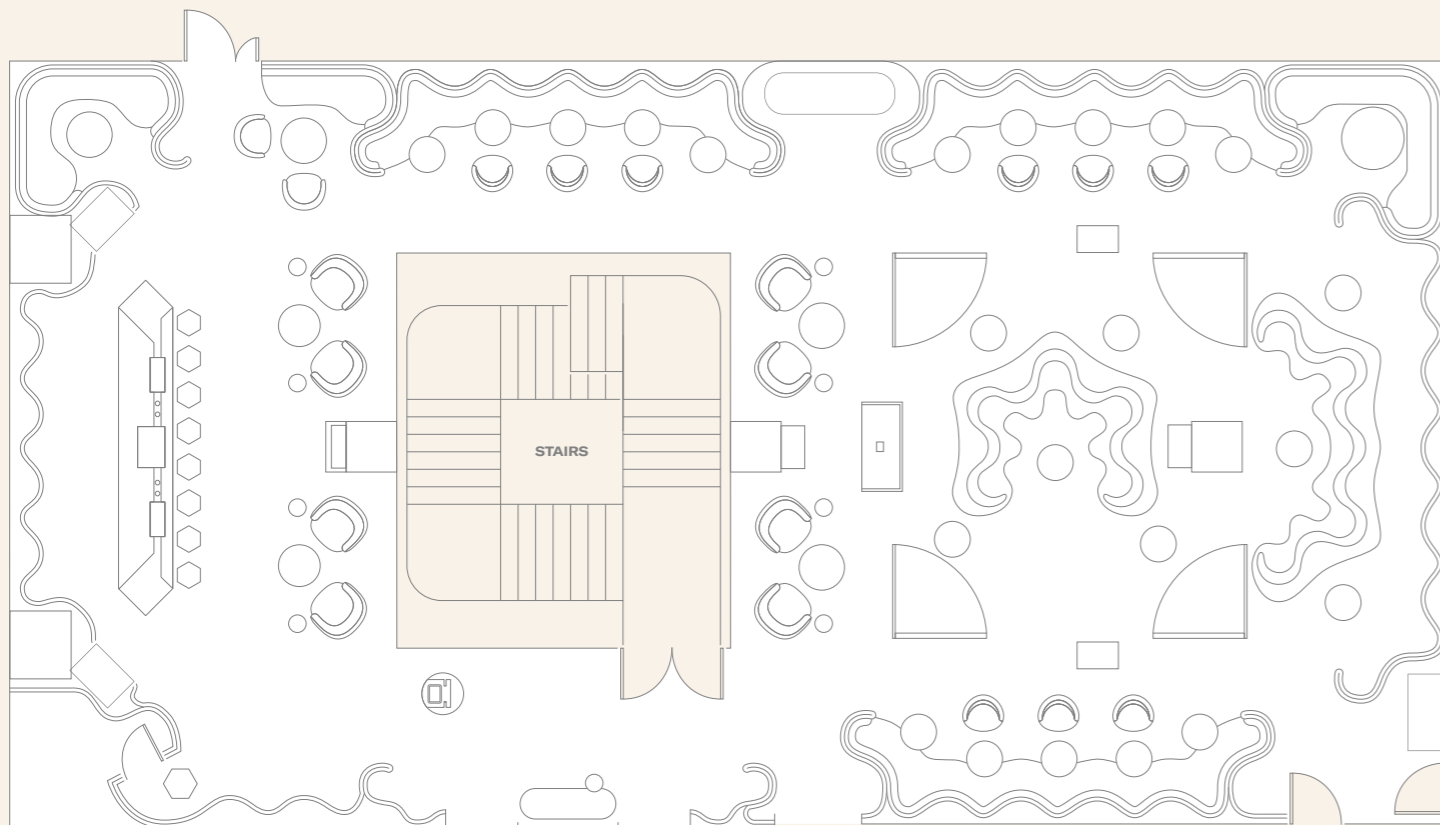
- A loading bay with space for a vehicle up to 10.4m in length with 20 kPa imposed load
- A dedicated bar providing seamless service
- A dedicated kitchen serving hot and cold food
- Direct lifts from street level



A visual reverie by design, The Green Room is a beautiful space perfect for receptions, meetings and gatherings.

CAPACITIES	Theatre	Classroom	Boardroom	Cabaret	Lunch/dinner	U-shape	Reception
The Green Room	76	30	28	24	40	20	180

DIMENSIONS	Area		Length		Width		Height	
	sq. m	sq. ft	m	ft	m	ft	m	ft
The Green Room	299	3,214	23.7	77' 8"	12.6	41' 3"	2.2	7' 2"



Introducing
exquisite
textures

Where mind and imagination ignite

THE GALLERY

Partnered with London's most iconic art institutions, The Gallery presents a collection of seven meeting rooms designed to quietly inspire.

SOUND & VISION

- Wall-mounted 98" 4K LED screens
- 4K video conferencing system
- Signage screens outside each meeting room to personalise your meetings with logos, videos, and more
- Touch panel for full control of AV system
- Bluetooth for connecting personal devices to sound system

EQUIPMENT

- Apple TV 4K and Barco ClickShare for wireless presenting
- Chromecast, Sony PlayStation and Xbox available on demand
- Live video and audio playback options from The Ballroom
- Hardwired Internet access on request

LOGISTICS

- A loading bay with space for a vehicle up to 10.4m in length with 20 kPa imposed load
- Private cloakroom and bathrooms
- Rooms designed to be connected
- Direct lifts to and from all hotel floors

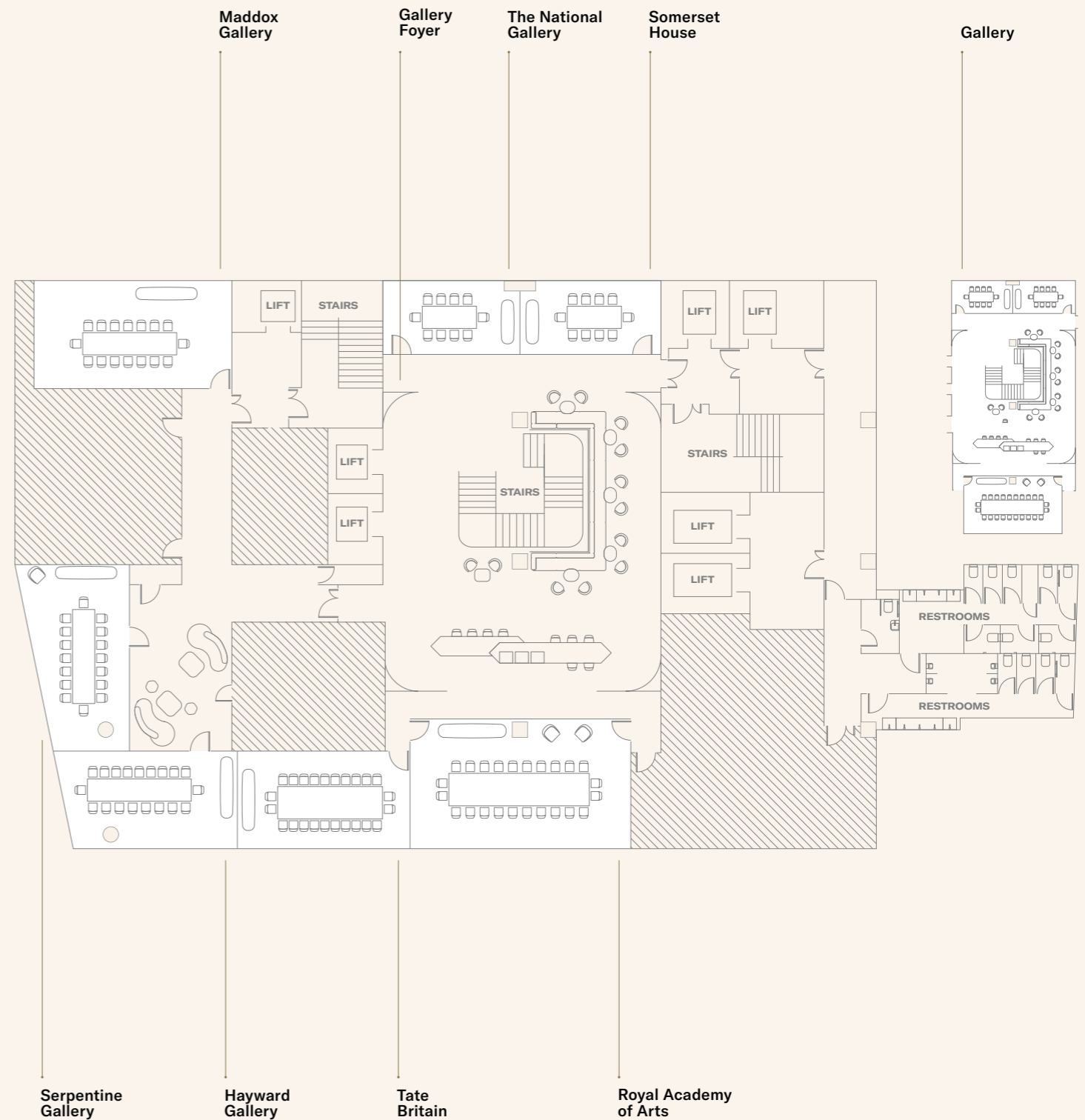


The rooms are linked to a spacious foyer, with the ability to be customised and configured to suit various needs.

CAPACITIES	Theatre	Classroom	Boardroom	U-shape	Cabaret	Lunch/Dinner	Reception
The National Gallery	20	9	8	-	-	8	22
Somerset House	20	9	8	-	-	8	22
The National Gallery + Somerset House	48	21	16	27	-	16	44
Royal Academy of Arts	64	36	24	28	24	36	60
Tate Britain	30	24	20	20	16	24	38
Hayward Gallery	34	21	20	16	16	24	38
Tate Britain + Hayward Gallery	82	56	40	44	32	48	76
Serpentine Gallery	-	-	16	-	-	-	-
Maddox Gallery	-	-	16	-	-	-	-
Screening Room 1	168	-	-	-	-	-	-
Screening Room 2	70	-	-	-	-	-	-

DIMENSIONS	Area		Length		Width		Height	
	sq. m	sq. ft	m	ft	m	ft	m	ft
The National Gallery	20	215	6.2	20' 4"	3.2	10' 6"	3.5	11' 6"
Somerset House	20	215	6.4	21'	3.2	10' 6"	3.5	11' 6"
The National Gallery + Somerset House	40	431	12.6	41' 4"	3.2	10' 6"	3.5	11' 6"
Royal Academy of Arts	54	581	9.9	32' 6"	5.8	19'	3.5	11' 6"
Tate Britain	34	366	7.9	25' 11"	4.2	13' 9"	3.5	11' 6"
Hayward Gallery	34	366	7.9	25' 11"	4.2	13' 9"	3.5	11' 6"
Tate Britain + Hayward Gallery	68	732	15.8	51' 10"	4.2	13' 9"	3.5	11' 6"
Serpentine Gallery	35	377	8.4	27' 7"	4.3	14' 1"	3.5	11' 6"
Maddox Gallery	39	420	8.9	29' 2"	4.6	15' 1"	3.5	11' 6"

BREAKOUT AREAS	Standing	sq.m	sq.ft	Length		Width		Height	
				m	ft	m	ft	m	ft
Gallery Foyer	160	162	1,744	16.8	55'	12.4	40' 6"	3.5	11' 5"
Gallery	275	256	2,756	25.8	84' 5"	12.4	40' 6"	-	-



The big picture

ODEON LUXE

ODEON
LUXE
WEST END

Unleash the power of cinema to turn ordinary presentations into inspirational think pieces. Recline. Relax. Switch off. The Londoner presents an intimate and individual screening experience, powered by the technology of Odeon.

- Two ODEON Luxe cinema screens

- Screen One (up to 168 guests)

- Screen Two (up to 70 guests)

CONFERENCE EVENTS

Engage and inspire your guests and colleagues with a conferencing experience like no other. With content projected onto the big screen using the latest technology and luxury tiered recliner seating, ODEON Luxe will breathe perfection and professionalism into every presentation.

PRIVATE SCREENINGS

Bring the excitement of the big screen to your private event. With a variety of content available, whether it is the latest blockbuster or an old favourite, ODEON Luxe is the perfect venue to host an exclusive private screening event for you and your guests.

ODEON LUXE

With expertly designed, hand-made seating in every screen, you will have more space and comfort to truly immerse yourself into films and presentations alike. ODEON Luxe West End will also feature an Oscar's Bar, the perfect place to entertain before or after the main event.

A NEW EXCEPTIONAL STANDARD



Introducing distinguished restaurant dining set in the privacy of The Londoner's inspiring event spaces.

WORLD-CLASS EVENTS

Dining in The Ballroom redefines the limits of possibility for weddings and events. Six different World Cuisine Stations each presents delicacies influenced by a local dining scene – featuring celebratory, luxurious complements. Additionally, bespoke dining menu dishes composed by The Londoner's Executive Chefs come prepared and plated in our two dedicated kitchens.

CONFERENCES

A unique experience for conference guests awaits. A Farmers Market, serving freshly prepared dishes from an exclusive pantry of locally sourced, sustainable produce. Exquisite breakfasts are followed by selections such as a fresh catch of the day, live stations and a homemade gelato counter at lunch.



TECH

NOLO

GY

TECHNOLOGY

SUPERSONIC

Connectivity

The Londoner is embedded with advanced, flexible and resilient data and communications networks throughout, built around a high-speed fibre backbone. That means Wi-Fi speeds of up to 150Mbps, with support for both current and next generation technological integration.

Edward – your virtual M&E host

Edward is an innovative and unique AI virtual assistant who responds to questions and requests via text message, with fluency in 59 languages and counting. Need more chairs? Help with a screen? Extra biscuits? Edward is your (virtual) man.

Coverage

The Londoner offers full mobile network coverage across all 16 storeys, with the following four providers:

- Vodafone
- O2
- EE
- Three UK

AUDIOPHILES

A market-leading sound system enables guests to listen with full immersion. In The Ballroom, the line array sound system creates crisp sound quality and clarity for every seat in the house. Applications and array modules allow us to direct sound, vary coverage and create asymmetrical patterns.

The audio is based on a redundant Dante network controlled by a digital signal processor and digital mixing desks. The speaker system features four subwoofers and eight mid/high units suspended from the ceiling, with amplifiers fit for big events and live concerts. To put it in simple perspective, London's spectacular O2 Arena uses the very same system.

VISIONARY

Screens

Bring your content to life in crystal clear definition. All meeting rooms at The Londoner feature the latest 4K 98" LEDw Samsung screens, as well as 13"- 43" Samsung Smart Signage screens outside the rooms.

The Ballroom comes with two large format Da-Lite screens, specifically manufactured and designed for impressive, big scale projections.

Lighting

A mood-setting dim. A beautiful object, distinctly illuminated. Whatever the desired effect, lighting has the subtle ability to change the dynamic of a room. Discover state-of-the-art lighting control systems created by Inverse Lighting together with interior design firm Yabu Pushelberg.

The Ballroom provides particular personalisation with its remote-controlled directional spotlights and theatre trusses to produce show-stopping event lighting.

BREATHING SPACE

The Ceiling

Made for a life on stage, The Ballroom's open steel grid ceiling features trusses to support theatre lighting and special effect AV equipment.

Air Quality

With six storeys below ground at a depth of 30m, The Londoner is the deepest habitable commercial building in London. To keep air as clean and fresh as above ground, a high-capacity air handling, cooling and heating system pumps 12 litres of filtered and purified air every second.

Contactless

For a seamless guest experience, many aspects of Londoner life are offered digitally, such as:

- In-room services
- Check-in/out
- Room keys



FLOW

A STATE OF EFFORTLESSNESS

SEAMLESSLY ENGINEERED

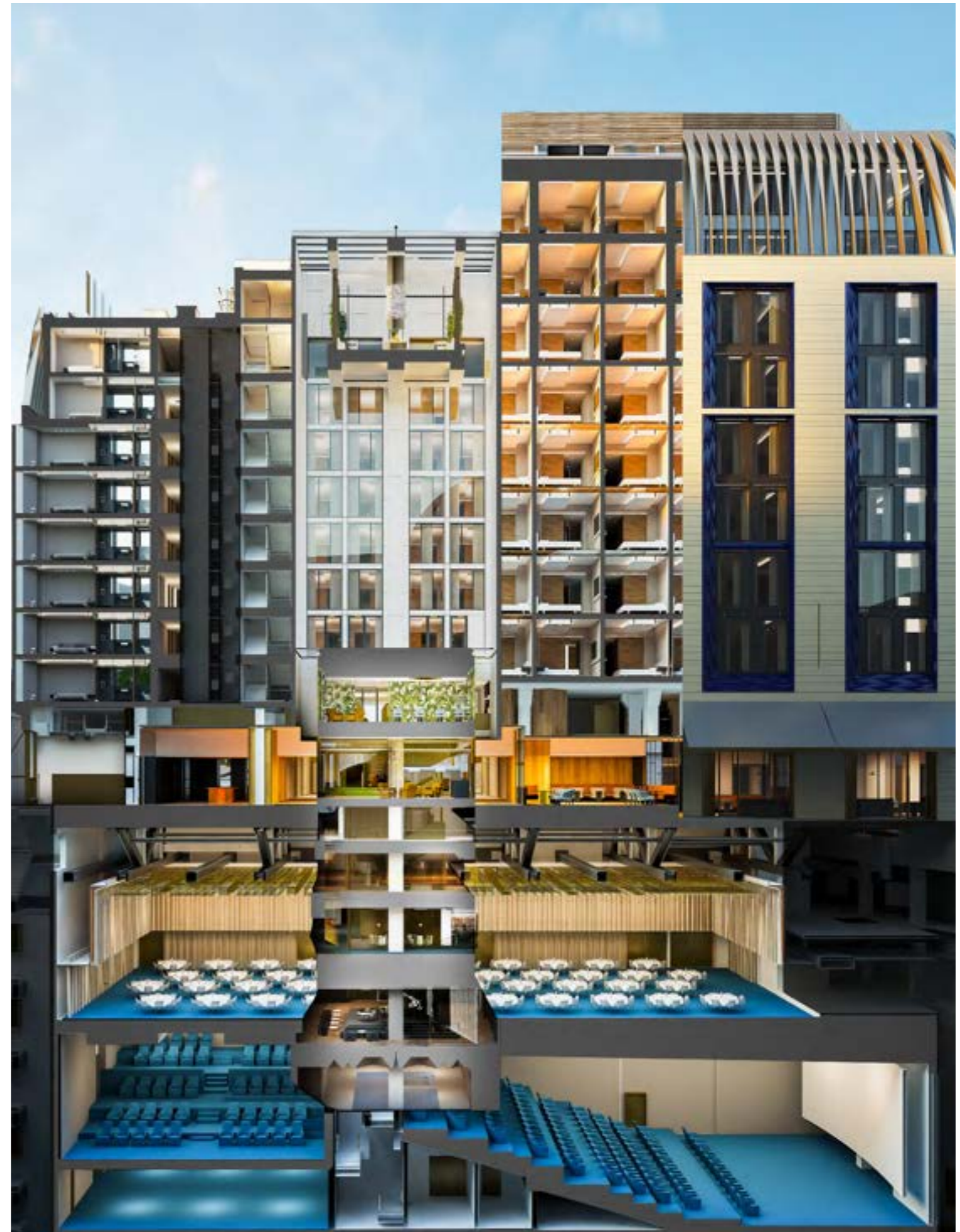
LOADING BAY

Designed to provide easy transportation for your equipment and goods, the loading bay accommodates a vehicle up to 10.4m in length with a 20kPa imposed load.

LIFTS

Fourteen lifts oversee the effortless flow of guests throughout The Londoner, ensuring uninterrupted arrivals and departures. There is direct lift access from the loading bay to The Ballroom, as well as double stacked goods and guest lifts.

LIFTS		Capacity (kg)	Persons	Cage size
Lift 1	Function Rooms Lift – FN 1	1000	13	1600mm wide x 1450mm deep
Lift 2	Function Rooms – FN 2	1000	13	1600mm wide x 1450mm deep
Lift 3	Cinema & Function Rooms, Employee Lift – EL 1	1600	21	2100mm wide x 1575mm deep
Lift 4	Cinema & Function Rooms, Car Goods Lift – GL 3	5500	-	2000mm wide x 4700mm deep
Lift 5	Cinema & Function Rooms, Goods Lift – GL 4	2500	33	800mm wide x 2700mm deep
Lift 6	Cinema & Function Rooms, Kitchen Ballroom Goods Lift – GL 5	2000	-	1500mm wide x 2480mm deep
Lift 7	Hotel Floors – PL 1	1350	18	500mm wide x 2000mm deep
Lift 8	Hotel Floors – PL 2	1600	21	2100mm wide x 1600mm deep
Lift 9	Hotel Floors – PL 3	1600	21	2100mm wide x 1600mm deep
Lift 10	Hotel & Basement Floors, Goods/Passenger Lift – GL 1	2000	26	1550mm wide x 2575mm deep
Lift 11	Hotel & Basement Floors, Goods/Passenger Lift – GL 2	2000	26	1550mm wide x 2575mm deep
Lift 12	Hotel & Basement Floors, Goods/Passenger Lift – FL 1	630	8	1100mm wide x 1400mm deep
Lift 13	Hotel & Basement Floors, Goods/Passenger Lift – FL 2	1350	18	500mm wide x 2000mm deep
Lift 14	Odeon Cinema, Passenger Lift – CN 1	1000	30	1200mm wide x 2000mm deep



SECURITY

THE SAFETY OF OUR GUESTS IS OF PARAMOUNT IMPORTANCE TO US. WE ARE SURE YOU FEEL THE SAME.

Several protocols have been put in place to ensure The Londoner is a safe place to be, under the guidance and supervision of Darren Carter, Head of Group Security.

A respected and leading figure in the hospitality security world, he also sits as the Chairman of the Institute of Hotel Security Management.

ON-SITE SECURITY

Our specialist security team will provide expert guidance and presence when planning and executing your event.

PRIVATE ARRIVALS FOR VIPS

Bespoke arrangements can be made to discreetly escort guests in and out of the building.

CORPORATE SECURITY LIAISON

Our experienced security team will be available to assist with all aspects of safety and security planning.

LOCAL POLICE RELATIONSHIPS

A strategic partnership ensures we have a close working relationship with command and local neighbourhood units.

CCTV

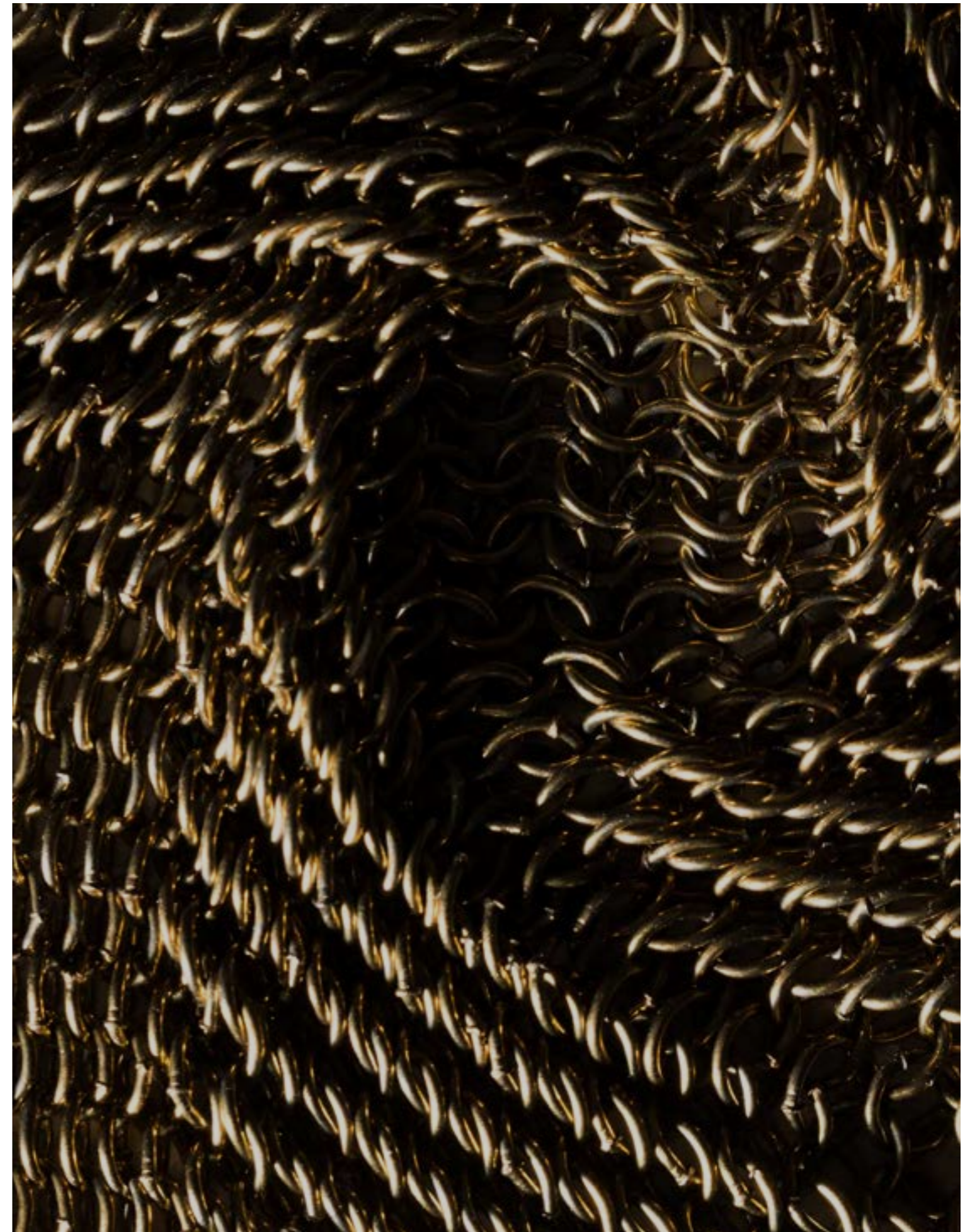
The Londoner operates a sophisticated security management system featuring an IP Video Management platform.



DARREN CARTER
CPP MSYI F.ISRM,
HEAD OF GROUP SECURITY
EDWARDIAN HOTELS LONDON

- Chairman Institute of Hotel Security Management
- Director ASIS UK

Darren is highly skilled in diverse areas of security and risk management; complex investigations, multi-cultural international organisations, threat and vulnerability assessment, high profile event planning and innovative critical need solutions. He is immensely respected throughout London and a leading figure in the hospitality security world.



A LIGHTER FOOTPRINT

BREEAM*

BREEAM is used to set high standards for the procurement, design, construction and operation of new developments. The Londoner has been given an 'Excellent' rating by independent assessors. That represents the top 10% of new non-domestic buildings in the UK.

INNOVATIVE TECHNOLOGY

The Londoner drives environmental change through technology. From preserving energy to reducing carbon emissions, we utilise new tools within areas such as lighting, spa, waste management, catering and more.

SUSTAINABLE PARTNERSHIPS

The Londoner handpicks its brand partners and suppliers for a sustainable yet premium experience.

YOUR EVENT

Determine your own carbon offsetting impact. We have the ability to produce energy usage reports for your event.

THE GREEN LOAN

The Londoner secured the first Green Loan in the sector, which was set out to encourage and facilitate environmentally friendly economic activity.

IMC

Waste Station

EXCELLENT
BREEAM rating*

30%
less carbon usage
than regulations
demand

HEATSAVR

Liquid Pool Cover

MONIKA

Temperature
Monitoring

DIGITAL

Room keys

CHP & LED

Lighting

*Building Research Establishment
Environmental Assessment Method

TRAVEL PLANS

BY AIR

Heathrow Airport (LHR)

The largest airport in Britain. Located 18 miles west of The Londoner, it is connected by Underground, express train and buses.

Gatwick Airport (LGW)

United Kingdom's second busiest airport. Located 30 miles south of The Londoner, it is connected by rail, express trains and buses.

City Airport (LCY)

A quieter airport favoured by business travellers. Set approximately nine miles east of The Londoner, it is the capital's most convenient airport.

Luton Airport (LTN)

One of London's two northern airports. Located 35 miles north of The Londoner, it is best reached by train or car.

Stansted Airport (STN)

Situated 41 miles northeast of The Londoner, Stansted connects travellers to Liverpool Street, London Bridge and Victoria by bus or train.

BY CAR

There are two public car parks in the vicinity:

- Q-Park Leicester Square, Whitcomb St, WC2H 7DT
- NCP Car Park London, 32 Brewer St, W1F 0LA

Congestion Charge

If you are driving to the hotel between 7am and 6pm Monday-Friday, you must pay a congestion charge by midnight that day or risk being charged a penalty fee.

www.tfl.gov.uk/modes/driving/congestion-charge

BY TRAIN

The closest railway station to The Londoner is Charing Cross, located approximately seven minutes away.

Underground lines and railway services:

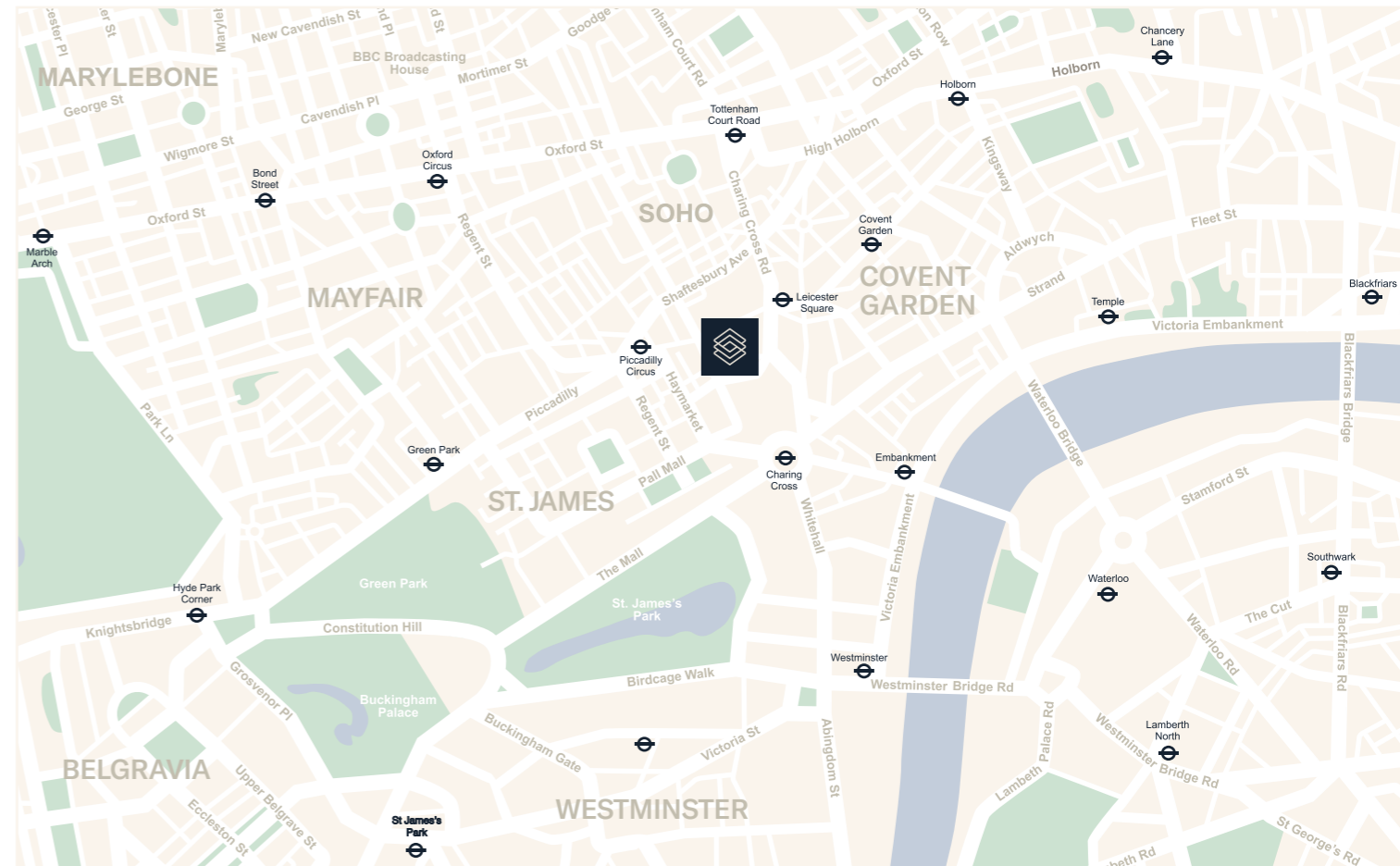
- Bakerloo
- Northern
- Southeastern

BY UNDERGROUND

The closest Underground station to The Londoner is Leicester Square, less than five minutes away.

Underground lines serving Leicester Square:

- Piccadilly
- Northern



TRAVEL SUMMARY

		Estimated transfer time
Airport	Heathrow	1hr 30 minutes by car
	Gatwick	1hr 45 minutes by car
	Luton	1hr 45 minutes by car
	Stansted	1hr 45 minutes by car
	City	45 minutes by car
Train	Charing Cross	5 minutes by car or foot
	Leicester Square	2 minutes by foot
Underground	Covent Garden	4 minutes by foot
	Piccadilly Circus	3 minutes by foot
	Park Leicester Square, Whitcomb Street, London	2 minutes by foot
Car	NCP Car Park London, Soho Brewer Street	5 minutes by foot

ADDRESS

The Londoner
38 Leicester Square
London WC2H 7DX

OVERVIEW

350 BEDROOMS

- 10 Queen Rooms
- 56 King Rooms
- 137 Deluxe King Rooms
- 110 Deluxe King City View Rooms
- 8 Junior Suites
- 20 Corner Suites
- 5 Capital Suites
- 2 Signature Suites
- The Tower Penthouse Suite

EXCLUSIVELY FOR OUR GUESTS

- The Residence, including
The Whisky room, Y Bar
and The Drawing room
- The Courtyard

MEETING & EVENTS AREAS

- The Ballroom
- The Green Room
- The Gallery's 7 meeting rooms
- 2 Screening rooms
- 33 Syndicate rooms

RESTAURANT & BARS

- Whitcomb's
- The Stage
- Joshua's Tavern
- 8 at The Londoner

THE RETREAT

- Gym
- Swimming pool
- Hydropool
- Sauna & Steam
- Cabanas & treatment rooms
- Refuel superfood clinic
- Spa bar
- Hair & nail salon
- Barbershop

GET IN TOUCH

For meeting or event enquiries, please contact:

Jason Kitt

jason.kitt@thelondoner.com

For event and press enquiries, please contact:

Events

events@thelondoner.com

Press

press@thelondoner.com

Website

thelondoner.com



THE LONDONER
LEICESTER SQ.

The Londoner
38 Leicester Square,
London WC2H 7DX

T +44 20 7451 0102
E events@thelondoner.com
W thelondoner.com

LEGENDSM
Preferred
HOTELS & RESORTS



EDWARDIAN
HOTELS
LONDON